



Established 1925

KANSAS GEOLOGICAL SOCIETY

# BULLETIN

Volume 85 Number 5

September—October 2010

## IN THIS ISSUE

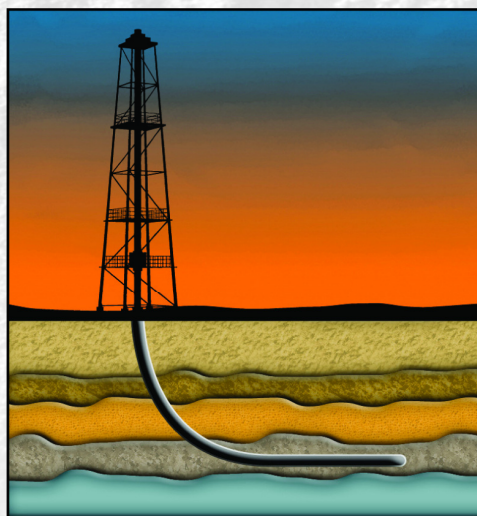
*Memorial  
Delbert Costa*

**Geo-Scenes  
Preview of Fall Field Trip  
Page 20**

**Seismic Symposium  
Page 18  
(Registration form inside)**



# Looking for Accurate Directional Data?



Directional Survey Plus data now available online

## Let TGS lead you in the right direction

Get on the right well path with Directional Survey Plus (DS+) data. DS+ data moves beyond the simple capture of measured depth, azimuth and inclination to create the most accurate spatial representation of the well path, from surface to total depth.

TGS researches DS+ wells to identify all wellbores, entering all runs and composites in original form with extensive metadata and superb quality control. The data are then processed and composited using proprietary workflows. The resulting standardized, high quality data is available in multiple industry formats.

Current coverage includes many of the hottest basins in the US, and multi-client coverage is expanding everyday. TGS also provides DS+ processing to clients worldwide.

Find out more at [www.tgsnopec.com/welldata](http://www.tgsnopec.com/welldata)  
888-LOG-LINE or [WellData@tgsnopec.com](mailto:WellData@tgsnopec.com)



Geophysical  
Products



Geological  
Products



Imaging  
Services



[www.tgsnopec.com](http://www.tgsnopec.com)

# Table of Contents

---

## Features:

Memorial—Delbert Costa.....	14
Geo-Scenes .....	20
Seismic Symposium .....	18

## Departments & Columns:

KGS Tech Talks .....	4
President’s Letter .....	7
Advertiser’s Directory .....	8
From the Manager.....	9
KGS Board Minutes .....	17
Professional Directory .....	23& 24
Exploration Highlights .....	26
Kansas Geological Foundation .....	28
KGF Memorials.....	30

## ON THE COVER:

*This photo shows a fault exposed in a roadcut on the East side of the Bighorn Mountains where Pennsylvanian age Amsden (shown on left side) is in contact with upthrown Mississippian age Madison Limestone (on right side). Also visible is the oxidized zone along the fault plane..*

*Photo courtesy of Tim Pierce*

---

## CALL FOR PAPERS

The Kansas Geological Society Bulletin, which is published bimonthly both in hard-copy and electronic format, seeks short papers dealing with any aspect of Kansas geology, including petroleum geology, studies of producing oil or gas fields, and outcrop or conceptual studies. Maximum printed length of papers is 5 pages as they appear in the Bulletin, including text, references, figures and/or tables, and figure/table captions. Inquiries regarding manuscripts should be sent to Technical Editor Dr. Sal Mazzullo at [salvatore.mazzullo@wichita.edu](mailto:salvatore.mazzullo@wichita.edu), whose mailing address is Department of Geology, Wichita State University, Wichita, Kansas 67260. Specific guidelines for manuscript submission appear in each issue of the Bulletin, which can also be accessed on-line at the Kansas Geological Society web site at <http://www.kgslibrary.com>

# SOCIETY Technical Meetings

*There are no technical meetings scheduled for the summer*

*We will resume meetings on September 7th*

Sept. 7th—Sal Mazzullo & Brian Wilhite, “*Mississippian Outcrop Lithostratigraphy & Depositional Architecture as Models for Subsurface Petroleum Exploration*”

Sept. 21st— Lynn Watney & Saibal Bhattacharya “*Collaborative Efforts in Geologic, Geophysical, and Engineering Modeling to Evaluate Carbon Sequestration Potential in Kansas*”

*Sept. 24, 25, 26—KGS Field Trip (see inserted flyer for details)*

Sept. 28th— TBA

Oct 5th—TBA

Oct. 19th—TBA

Oct. 26th—TBA

## *Location for Technical Meetings*

*All KGS technical presentations are held at 12:30 p.m. at the **Wichita Bar Association**, located at 225 N. Market, ground floor conference room, unless otherwise noted.*

*Note: For those geologists who need 30 points to renew their licenses, there will be a sign-in sheet at each presentation and also a certificate of attendance.*



## BOARD OF DIRECTORS

---

### PRESIDENT

Rick Saenger

### PRESIDENT-ELECT

Doug V. Davis

### SECRETARY

Marjorie Noel

### TREASURER

David Clothier

### DIRECTORS

Lynn Watney  
Robert O'Dell  
Ken Dean

### ADVISORS

Jon Callen  
Ernie Morrison

## COMMITTEE CHAIRMEN

---

### Advertising

Kent Scribner

### Advisory

Jon Callen  
Ernie Morrison

### Annual Banquet

Doug Davis

### Budget Committee

Dave Clothier

### Bulletin

Sal Mazzullo

### Continuing Education

Robert Cowdery

### Distinguished Awards

Lynn Watney

### Directory

Larry Richardson

### Environmental

Kent Matson

### Field Trip

Larry Skelton

### Fishing Tournament

Randy Teter

### Future Plans

Tim Pierce

### Golf

Paul Gunzelman

### Historian

David Barker

### Investment

Larry Skelton

### Library

David Clothier

### Membership

Roger Martin

### Nomenclature

Ted Jochems

### Picnic

Larry Friend

### Public Relations

John H. Morrison, III

### Shooting Tournament

Marjorie Crane-Noel

### Technical Program

Robert Cowdery

### Ticket Sales

Larry Richardson

Robert Cowdery

Bill Shepherd

## A.A.P.G. DELEGATES

---

Ernie Morrison	Robert Cowdery	Doug Davis
2010	2012	2012

## BULLETIN STAFF

---

### EDITOR

Sal Mazzullo  
salvatore.mazzullo@wichita.edu (316) 978-7211

### ADVERTISING

Kent Scribner  
Stelbar Oil Corp. (316) 264-8378

### PROFILES/MEMORIALS

Robert D. Cowdery  
Consultant (316) 267-9030

### EXPLORATION HIGHLIGHTS

John H. Morrison, III  
Independent O&G (316) 263-8281

### STATE SURVEY

Rex Buchanan  
KS Geological Survey (785) 864-3965

### SOCIETY NEWS

KGS Library (316) 265-8676

### EDITOR EMERITUS

Wes Hansen (316) 863-7313

## K.G.S. LIBRARY

---

PHONE 316-265-8676 FAX 316-265-1013

email: [frontdesk@kgslibrary.com](mailto:frontdesk@kgslibrary.com) or

Web: [www.kgslibrary.com](http://www.kgslibrary.com)

### LIBRARY MANAGER

Rebecca Radford 265-8676

[manager@kgslibrary.com](mailto:manager@kgslibrary.com)

The KGS *Bulletin* is published bi-monthly by the Kansas Geological Society, with offices at 212 North Market, Wichita, Kansas 67202 Copyright 2006, The Kansas Geological Society. The purpose of the *Bulletin* is to keep members informed of the activities of the Society and to encourage the exchange and dissemination of technical information related to the Geological profession. Subscription to the *Bulletin* is by membership in the Kansas Geological Society. Limited permission is hereby given by the KGS to photocopy any material appearing in the KGS *BULLETIN* for the non-commercial purpose of scientific or educational advancement. The KGS, a scientific society, neither adopts nor supports positions of advocacy, we provide this and other forums for the presentation of diverse opinions and positions. Opinions presented in these publications do not reflect official positions of the Society.

# TRILOBITE TESTING INC.

Eleven Trucks Serving  
Kansas - Colorado - Texas  
Nebraska - Illinois

Slickline services using the same  
Alpine Electronic Pressure  
Guages as used on DST's

Back pressure testing (G1 & G2)

DST's

**1-800-728-5369**

**FAX: 1-785-625-5620**  
**trilobite @eaglecom.net**

SHOPS LOCATED IN:

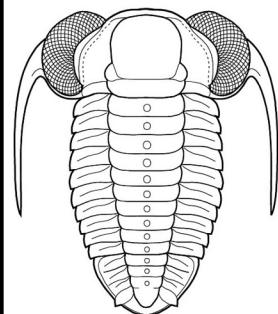
Hays, KS

Scott City, KS

Pratt, KS

Hugoton, KS

Clay City, IL



## ***CAN YOU NAME THE CRITTER?***

Sponsored by Trilobite Testing, Inc.

Is your paleo up to date?

If you know the name of the trilobite,  
submit your guess via e-mail to  
manager@kgslibrary.com

Remember that *Trilobite Testing* is  
sponsoring your efforts, so be sure to thank  
Paul Simpson the next time you see him.

**Kyle Day** correctly identified last issue's Trilobite

***Peachella iddingsi***

**Bulletin committee members and PhD's in  
Paleontology are prohibited from entering.**

### ***The Kansas Geological Society Wishes To Thank The Following For Their Support Of The Annual Picnic***

American Energies Corp.  
Mac Armstrong  
Basic Energy Services  
Don Beauchamp  
Bittersweet Energy, Inc.  
Brito Oil Company  
Covey – The Well Watchers  
Doug Davis  
Ken Dean  
Alan DeGood  
Diamond Testing  
Eagle Creek Corporation  
Edmiston Oil Company  
Falcon Exploration  
Brian & Debra FitzGerald  
Geotechnical Services, Inc.  
Grand Mesa Operating  
Halliburton Energy Services  
J. Fred Hambright, Inc.  
Harvest LLC  
Hedke-Saenger Geoscience  
Gerald Honas  
Hyde Resources, Inc.  
Independent Oil & Gas  
Phil & Chris Knighton  
Lario Oil & Gas Company

Lotus Operating Co., LLC  
Roger Martin  
Sal & Chellie Mazzullo  
McCoy Petroleum Corp.  
Gus Messinger  
Ernie & Pat Morrison  
Mull Drilling Company, Inc.  
Murfin Drilling Company  
National Oil  
Robert O'Dell  
Palomino Petroleum, Inc.  
Pickrell Drilling Company, Inc.  
Range Oil Company, Inc.  
Larry Richardson  
Kirk T. Rundle  
Ron Schraeder  
Bill Shepherd  
Steve Stribling  
Sunrise Oilfield Supply Co.  
Superior Well Services  
Trilobite Testing  
Tucker Wireline Services  
Val Energy, Inc.  
Vincent Oil Corporation  
Woolsey Petroleum Corporation

# President's Letter

Dear Members;

The annual KGS Picnic was held on Friday, August 13<sup>th</sup>, at Allstar Sports on west 21<sup>st</sup> Street. We had a very nice turnout with about 150 members, friends and family attending. Even though Friday the thirteenth has unlucky connotations, Don Beauchamp came away from the bingo event as the big winner, with four passes to the zoo and the much envied painting by a very skilled elephant. (I wonder if the elephant can contour maps?) Don's success proves that training for a skilled event *does* pay off with big dividends! Marjorie Noel, our Picnic Committee Chairperson, deserves a big "Thank you" for her hard work!



The 73<sup>rd</sup> KIOGA convention was well attended and those of us who signed up for golf or sporting clays enjoyed a very nice and unusually cool day after the rain ceased. It's always great to renew acquaintances and visit with folks that you see on a regular basis.

On September 24-26<sup>th</sup>, Dr. Sal Mazzullo and Brian Wilhite will be leading a field trip to SW Missouri. The title of this field trip is: **MISSISSIPPIAN OUTCROP LITHOSTRATIGRAPHY AND DEPOSITIONAL ARCHITECTURE AS MODELS FOR SUBSURFACE PETROLEUM EXPLORATION**. A primer for the field trip is the subject of our first technical talk of the 2010-2011 series on September 7<sup>th</sup>.

On October 27<sup>th</sup>-29<sup>th</sup>, the KGS is participating with the Kansas Geological Survey and the Geophysical Society of Kansas in a Seismic Symposium. Technical papers will be presented on Thursday and Friday morning on topics related to high resolution seismic data, geothermal applications, seismic data acquisition, and oil and gas exploration. Forms for Registration and Sponsorship should be found within this bulletin. This should be a very good and informative event.

We have received additional membership surveys and they have been combined with the earlier data. The results of part of the survey was reviewed and summarized by Paul Gunzelman and Tim Pierce. They focused on the more subjective parts of the survey that involved commentary and captured the more recurrent statements. Some of the concerns expressed by the membership regarding the digital library have already been addressed. The readability of the logs and preview screens is an issue that has been significantly improved. The rate of scanning new data is another concern that is in the process of being resolved. Recent opinions by members that use the Walters Digital Library indicate that functionality has been markedly improved. Comments related to the paper library included a need for seismic and environmental data, the acquisition of a "user friendly" copier and large scale plotter, a more expeditious input of new data, and a quieter library premises. In the section of the survey that pertains to library services, the log data was, by far, the most important followed by Geo reports, Technical talks, and Strip logs. These results are not surprising as these all pertain to our livelihood.

We will publish all the results in a later bulletin. I want to thank Paul and Tim for their diligence and hard work on this project.

Best regards;  
Rick Saenger

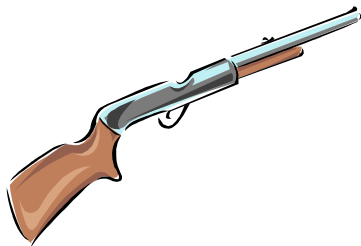
Continued on page 10

**GRADUATE EDUCATION**  
**for active professionals**

<i>Through:</i>	<i>Leading to:</i>
<i>Workshops</i>	<i>Academic credits</i>
<i>Field Trips</i>	<i>Certificates (pending)</i>
<i>Distance Education</i>	<i>M.S. degree</i>

*With specializations in:*  
*Petroleum Geology*  
*Groundwater*  
*Exploration Geophysics*  
*Environmental Geochemistry*

*Information:*  
 KSU Continuing Education: [www.dce.ksu.edu](http://www.dce.ksu.edu)  
 KSU Geology Department: [www.ksu.edu/geology](http://www.ksu.edu/geology)  
 KSU Graduate School: [www.ksu.edu/grad](http://www.ksu.edu/grad)  
 or e-mail George Clark, interim dept. head: [<grc@ksu.edu>](mailto:grc@ksu.edu)



Friday, October 1st

KGS Annual Shooting Tournament

Lynbrooke Sporting Clays

See Registration Flyer in this issue

**ADVERTISER'S DIRECTORY**

	<i>page</i>
Allied Cementing Company, Inc	25
Duke Drilling	25
GeoCare Services AAPG	13
Kansas Geological Foundation	28
Kansas State University	8
Lockhart Geophysical	25
LogSleuth-MJ Systems	33
MBC Well logging	25
Murfin Drilling Company, Inc	25
Oneota Resources	11
PARAGON Geophysical Services, Inc	13
Professional Directory	23-24
Sunrise Oilfield Supply	25
TGS-NOPEC Geophysical Company	2
Tomcat Drilling	25
Trilobite Testing	6
Walters Digital Library	12
Weatherford	35
Well Enhancement Services, LLC	12

**ADVERTISER'S RATES: 2010**

<b>Full Page</b>	<b>B&amp;W</b>	<b>Color</b>
6 issues	\$2,000	\$2,500
3 issues	\$1,080	\$1,325
1 issue	\$480	\$525
<b>1/2 Page</b>		
6 issues	\$1,000	\$1,500
3 issues	\$540	\$825
1 issue	\$225	\$350
<b>1/4 Page</b>		
6 issues	\$600	\$900
3 issues	\$325	\$525
1 issue	\$150	\$250
<b>1/8 Page</b>		
6 issues	\$300	\$500
3 issues	\$175	\$325
1 issue	\$75	\$185
<b>Professional Ad (Business Card)</b>		
6 issues	\$90	\$180

*For one-time ads, call Rebecca at 316-265-8676*

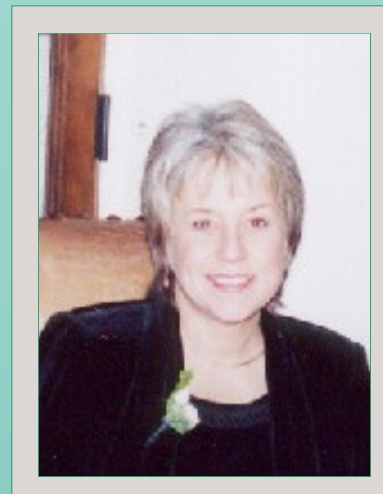


## From The Manager

Dear Members,

Isn't that a great picture of our President on the preceding page? Kinda makes me want to go on vacation! Oh wait, I am on vacation while you are reading this. Speaking of vacations, Tim Pierce brought in some great photos of his vacation in Wyoming this summer. You see one of them on the front of this issue and there are more throughout the publication. If you have any to share, please send them to me with an explanation of what / where they are.

As Rick said, we had a good turnout for our annual picnic and Marj Noel did a great job of organizing it once again and thank you to Doug Davis for calling for donations! Thank you to all of you who helped to support it with your donations and by coming out and enjoying the evening.



Next up will be our annual Clay Shoot out at Lynbrooke Sporting Clays near Augusta. This is always well attended and a good time, even for those who aren't such good shots! I look forward to seeing several of you again this year. The registration is on-line and also inserted in this issue.

KIOGA was very well attended and it is always good to see some of you from out of town. Thanks for stopping by the booth and saying "hello." If you attended KIOGA, you should have picked up a copy of their publication "The First 150 Years..." This is a wonderful book with some great articles chronicling the history of oil & gas exploration in Kansas.

As you read this issue, we will have started back with our Fall Season of Technical Talks. Bob Cowdrey is working hard to bring us some great talks again this year. In addition to Bob's technical talks, you might want to take advantage of the Seismic Symposium that will be held here in Wichita October 27 -29. The information for registration is inserted in this issue and can be found on-line at [www.kgslibrary.com](http://www.kgslibrary.com).

Respectfully submitted,  
*Rebecca Radford*  
Manager



Let Us Print Your *Geo Reports*  
And Save Your Time For Finding More Oil & Gas  
Top Quality Color Printing For Our Membership  
Email your files to: [tammy@kgslibrary.com](mailto:tammy@kgslibrary.com)

The Kansas Geological Society & Library



*The*  
2011 AAPG MID-CONTINENT  
SECTION MEETING

Oklahoma City, Oklahoma  
Saturday through Tuesday, October 1<sup>st</sup> - 4<sup>th</sup> 2011

[www.2011AAPGMCSSectionMeeting.org](http://www.2011AAPGMCSSectionMeeting.org)

*Plan to attend the 2011  
AAPG Mid-Continent  
Section Meeting*

*Jointly Hosted By The*  
Oklahoma City  
Geological Society  
And The  
Oklahoma City  
Geological Foundation

**Below is a screen shot of the KGS website where you now access the  
Robert F. Walters Digital Library  
www.kgslibrary.com**

**Kansas Geological Society & Library** | Home - Mozilla Firefox

File Edit View History Bookmarks Tools Help

http://www.kgslibrary.com/index.cfm

Most Visited My Yahoo! WDL Bloomberg.com: Ener... Gmail - Inbox (1) - ka... Google The Kansas Geologica... Fun With Document T... Kansas Geologica

powered by **YAHOO! SEARCH** Search PDFCreator Options

Bloomberg.com: Energy Prices My Yahoo! Find a Specific Bug **Kansas Geological Society & Lib**

**Kansas Geological Society & Library** Founded in 1923

Sign in to Robert F. Walters Digital Geological Library

User Name Password

Home About Officers Bulletins Events Tech Talks Membership Links Contact Feedback

**Society**

The Kansas Geological Society is composed of geological professionals from across the country. The Society hosts many educational lectures and social functions and maintains a library of geological data.

The Kansas Geological Society and Library is located in the Landmark Square Building, just north of the corner of Market and First Street in Wichita.

[Bulletin: November - December 2009](#)

**Library**

The Kansas Geological Society Library has the most complete collection of oil and gas well data for the State of Kansas and surrounding areas. Donated by industry since 1923.

Robert F. Walters Digital Geological Library has 1,018,425 digital documents and logs available. [See](#) the count by county.

**Walters Digital Library New Software Review**

Tuesday, January 5, 2010

We will conduct a class on the new software for the Walters Digital Library

Please plan to attend and bring your questions and suggestions

12:30 PM

Wichita Bar Association

225 N. Market

**The KGS Library**

**Sign In Here**

**Oneonta Resources, LLC**

**Michael Bradley**  
518 17th Street, Ste 1000  
Denver, Colorado 80202

Phone: 970-222-7530  
Fax: 303-374-7912  
lonetree9@earthlink.net

**Kansas 3-D Projects**



## WOULD YOU LIKE TO INCREASE YOUR PRODUCTION AT A FRACTION OF THE COST OF HORIZONTAL DRILLING?



**Well Enhancement Services, LLC** is jetting laterals utilizing new technology and coiled tubing. We now have the ability to place hundreds of gallons of acid hundreds of feet away from the well bore. This allows us to not only enhance existing production but to produce reserves previously unreachable. It has established itself by repeatedly increasing production in both new and existing wells. Contact us for more information, questions or to schedule your next well with **WES**.



*“Tap into success.....with WES”*

### Please Contact Us:

Phone: (785) 625-5155

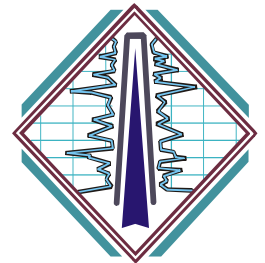
Fax: (785) 625-4151

Field: (785) 259-4638

wesofhays@hotmail.com  
Box 87, Schoenchen, KS 67667



**Robert F. Walters Digital Library  
View Millions of Documents!**



**NEW SOFTWARE  
HAS ARRIVED!!**

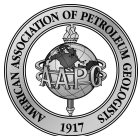
***We have a new address***

[www.kgslibrary.com](http://www.kgslibrary.com)

### Membership Details

If you are a member in good standing of the Kansas Geological Society Library, you can purchase a yearly membership to the WDL for an additional \$600.00/yr.

If you do not belong or qualify to belong to the KGS library, you can purchase a yearly membership to the WDL for \$2000.00 /yr.



Security for AAPG Members  
& Their Families  
Through Group Insurance

*Life*  
*Health*  
*Dental*  
*Disability*  
*Auto and Homeowner*  
*Supplemental Plans*

AAPG's  
GeoCare Benefits Insurance Program  
P. O. Box 189  
Santa Barbara, CA 93102-0819  
**800-337-3140**  
E-mail: [geocarebenefits@agia.com](mailto:geocarebenefits@agia.com)  
[www.geocarebenefits.com](http://www.geocarebenefits.com)

## Kansas Geological Foundation Video / DVD Collection

The KGF has an extensive collection  
of videos available for check-out  
at no charge.

Only pay for shipping back.

These are ideal for classroom or  
general public viewing.

See the web for  
titles & descriptions  
[www.kgfoundation.org](http://www.kgfoundation.org)

Call 316-265-8676  
Ask for Janice to check out videos

## KANSAS GEOPHYSICS IN THE 21ST CENTURY

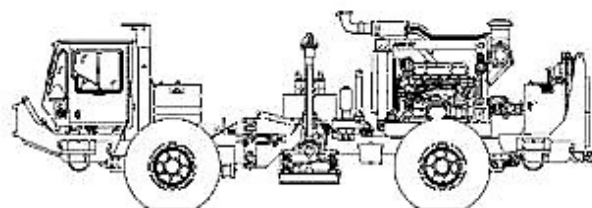
A symposium to be held  
October 27th —29th

An update of the Kansas Geological  
Survey's Bulletin 137 (1959)  
**Symposium on Geophysics in Kansas**

Sponsored by:

Kansas Geological Society  
Kansas Geophysical Society  
Kansas Geological Survey

Wichita Airport Hilton  
**(Registration Form in this issue)**



~The TOP CHOICE for 3D SEISMIC~

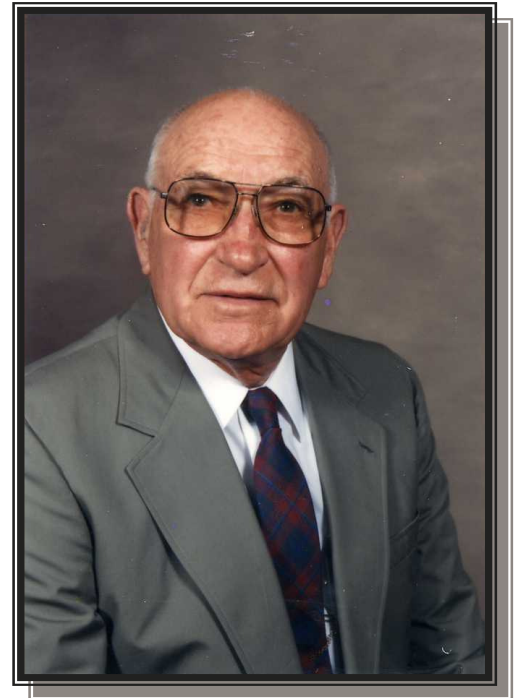
John H Beury III ~ Pres John Aguilar ~ Op. Mgr.

**PHONE (316) 636 - 5552 FAX (316) 636 - 5572**

3500 N. Rock Rd., Bldg 800, Suite B  
Wichita, KS 67226

[paragon@paragongeo.com](mailto:paragon@paragongeo.com)

# *Memorial* ————— *Delbert Costa*



With the passing of Delbert Costa the Kansas Geological Society lost an Honorary Member and the profession lost one of its true gentlemen.

Delbert was born in 1910 in Fairview Oklahoma and in April of this year celebrated his 100<sup>th</sup> birthday in Council Grove, Kansas. Delbert attended grade school in Fairview but graduated from high School and Jr. College in Hutchison, Kansas. He then attended Kansas State College of Agriculture and Applied Science. Besides studying geology, he also participated on the track team as a javelin thrower. With graduation in 1934, Delbert found the country immersed in the Great Depression and securing employment was difficult.

After graduation he was hired by the WPA and worked in ground water. Eventually with the help of Dr. VerWeibe of the University he secured employment with Pryor and Lockhart and found a mentor in Jim Daniels, father of current KGS member James R. Daniels. In 1943, Delbert was employed by The Superior Oil Company as District Geologist and in 1947 he was transferred to Oklahoma City as District Geologist. While in Wichita he had been very active in the Kansas Geological Society.

In 1950, Delbert resigned from Superior and returned to Wichita and for a brief time worked for W.L. Hartman. He then became a Consultant and pursued this phase of his career until 1960. He joined Mull Drilling and during his employment at Mull, he was both Vice-President and President of the Kansas Geological Society. In 1990 he received the high honor of being designated an Honorary Member.

Delbert continued his career as Petroleum Geologist as a consultant except for the period when he served as head of the Oil and Gas Division of the Kansas Corporation Commission.

In 1969 he married Loa Smith in Wichita and they resided in Wichita until 1992 when they moved to Council Grove. Delbert has a son Craig of Seattle, Washington and a daughter, Cheryl Kincaid of Council Grove, 2 grandchildren and three great-grandchildren.

Delbert was a great individual admired and respected by all who knew him

Delbert belonged to a multitude of organizations, a great number involving geology, but others with different interests. He was an amateur archaeologist and a very active member of the Archaeological Association of South Central Kansas. He took a great interest in tutoring young geologists. A memorial service was held in Council Grove on August 27<sup>th</sup> and an additional service was held on September 2nd at Grace Presbyterian Church in Wichita.

The family has designated as memorials: the Council Grove United Methodist Church, Morris County Historical Society, and the Geology Department at Kansas State University. An additional memorial has been established with the Kansas Geological Foundation.

# KGF Accelerated Data Integration Project – President’s Report

Dear KGS and KGF Members

This project of the Kansas Geological Foundation (KGF), which has been ongoing since authorized by the Board late this last spring, is focused on sorting the mass of geological information and data that has accrued in the basement of the KGS Library over the past few years through donations to the KGF. In years past integration of donated information and data into the main library collection has depended on strictly volunteer efforts of, in many cases, just a few very dedicated individuals. Realizing that level of effort was not sufficient, the Board authorized a plan to utilize supervised geology students to sort through this accumulated data so that it can be ultimately integrated into the library where its preservation and use can be assured.

The actual physical effort, under the overall supervision of Ted Jochems, began early this summer. In an accompanying report Ted updates you with details of the accomplishments of the Accelerated Data Integration team and how that effort is going forward. The progress being made in organizing the data in preparation for final integration into the library collection is striking. If you have a chance, stop by the library and check it out.

The KGF Board determined that this was a worthy project in that it simultaneously supports two fundamental goals of the KGF, those being: (1) Geologic Data Preservation and (2) Student Financial Assistance. The data preservation component in particular is very important if we as exploration geologists are to continue the hunt for those elusive accumulations here in the midcontinent area. That one piece of old data added to the library through this project may be the key to a significant discovery.

How can you help or become involved in this project? First, if you can, volunteer some of your time to the project. If that’s not possible consider a monetary donation specifically targeted to this project. Or if you are in the process of considering legacy donations in the future remember the KGF as a possibility.

I know that some have given to this essential project this past spring and summer. I hope that as you carefully evaluate your year-end giving plans that you might consider another gift this year. We have a commitment from more than one donor to do just that, we hope that there are others as well who will join the effort to make this project a success.

Thanks to you all for your support of this project and the KGF.

M.L. Korphage  
KGF President, 2010



## PROGRESS REPORT FOR ACCELERATED INTEGRATION PROJECT KANSAS GEOLOGICAL FOUNDATION, SUMMER 2010

During Summer, 2010, the Foundation board funded a project to process donations of data which have accumulated in the basement cages over the past twenty years. Four students worked on the project: Nolan Mans, Gracie Crisler, Seun Olaosebikan and Patrick Wilson. Ted Jochems was the project manager. Nolan Mans will continue part – time while he is studying geology at Wichita State.

Electric logs, geology reports, completion reports, drill stem test reports and other pertinent data were removed from the donations for further processing. Other material was evaluated and discarded. Data from the western ranges are the first priority for integration, so eastern range data were set aside until such time as an eastern Kansas integration effort can be funded. Data from other states were set aside and will be donated to libraries or governmental organizations in those states when requested.

The unsorted data has been sorted by township first, then by range and section. Then they were combined with a pre-existing sorted “married set.” A dozen donations of already sorted logs (up to four file cabinets) were also combined with the married set. The married set includes electric logs, geology reports (typed and plotted), drilling time and completion reports. All duplicates were discarded. It is estimated that there are 60,000 – 70,000 documents in the married set. This data is sorted into geographical order, thus making it accessible upon request to industry and government professionals for research and prospecting. Eventually it will be integrated into the Walters Digital Library and the KGS Library paper files.

Additionally, we organized a set of electric logs donated by Baker – Hughes to make it accessible to Library members. This set includes approximately 50,000 logs in 26 file cabinets. It includes Lane – Wells logs (beginning in 1940) and later Dresser – Atlas logs.

During the course of the summer’s work, the two cages in the basement (approximately 3,800 square feet) have been cleaned and reorganized into useful working space. Various donated maps will be stored here until processed for use by the membership. Many donated publications about the geology of other states will be available to geologists researching areas outside Kansas.

The job is not yet finished, nor will it be soon. This summer’s work was intended only to organize the data into a form which is amenable to integration, while making it accessible upon request to the Library’s membership. Additionally, donations continue to come in to the Foundation. These donations will pile up if not processed in a timely manner. Integration will be an ongoing job for as long as the Foundation and the Library exist. It requires much more time than we can reasonably expect working geologists to donate. People must be hired to perform this work and they must be overseen by experienced geologists and Library staff members. The Foundation board will be appealing for monetary donations to continually fund the integration of data into the Library’s collections.

We are deeply grateful to those who have already donated to the Accelerated Integration Project and strive to ensure that every dollar is sensibly and productively spent.

— Ted Jochems





---

# Kansas Geological Society Board Minutes

---

**July 13, 2010** Mr. Rick Saenger called the meeting to order at 11:38 A.M.

## FINANCIAL REPORT/MANAGERS REPORT

- A. **Treasurer's Report-** Mr. Clothier announced that we have no CD's expiring until October 21 and closer to that time, will look into various options. *Mr. Watney moved to accept the Treasurer's report, Mr. Davis seconded the motion and the motion passed unanimously.*
- B. **Manager's Report-** Mrs. Radford presented the Manager's Report as of June 30, 2010. This happens to be the first time this year that both the WDL and the paper library were in the black. Monthly income was \$55,728.28 and expenses were \$52,272.98. When the library net income is combined with the WDL net income of 6,418.37, the net income for the month came to \$9,873.67. The Society has 694 members, the Library has 213 members and WDL has 175 members.

## OLD BUSINESS

- A. **Membership Survey-** About 12% have been turned in. Mr. Saenger recommends meeting with younger generation geologists to bridge the gap. Have not yet met with Mr. Pierce or Mr. Gunzelman but will soon.
- B. **Formation of committee for reviews-** Mr. Callen and Mr. Morrison have agreed to be on committee for Employee Reviews.

## NEW BUSINESS

- A. **Energy Library Conference in San Antonio (Oct. 8-9)-** Mrs. Radford would like approval to go to the Conference in October. *Mr. Clothier made the motion to send Mrs. Radford to the conference. Mr. Watney seconded the motion and the motion passed unanimously.*
- B. **KU Torp Technology Fair (Sept. 7-8)-** WDL will have a booth to show software/program.

**ADJOURNMENT-** *Mr. Clothier motioned to adjourn the meeting at 12:53 p.m. and the motion passed unanimously.*

## SPECIAL SESSION- BOARD VOTE VIA EMAIL- JULY 28, 2010

On July 28, 2010, a special vote was held via email to approve an increase in the WDL non-library membership category. Currently, WDL members who are not paper library members are being charged \$1500/year, which is only \$100 more than paper library members. Mrs. Radford has requested that we increase that particular category of membership to \$2000/year. *Mr. Clothier called for a motion via email to increase the WDL non-library membership category from \$1500 to \$2000/year. Mrs. Noel seconded the motion and the motion passed unanimously via email.*

**August 10, 2010** Mr. Rick Saenger called the meeting to order at 11:42 A.M.

## FINANCIAL REPORT/MANAGERS REPORT

- A. **Treasurer's Report-** Mr. Clothier presented us with the Treasurer's report for July 2010. *Mr. Davis moved to accept the Treasurer's report as presented, Mr. O'Dell seconded the motion and the motion passed unanimously.*
- B. **Manager's Report-** Mrs. Radford presented the Manager's Report as of July 31, 2010. The month proved to be great for the paper library with an income of \$34,245.59. Monthly income was \$62,697.59 and expenses were \$62,713.42. When the library net income is combined with the WDL net income of -\$11,560.70, the net income for the month came to a loss of \$11,306.53. It is noted that the WDL did make the \$20,000 quarterly payment which resulted in the negative income. The Society has 700 members, the Library has 221 members and WDL has 175 members.

## OLD BUSINESS

- A. **Update on Membership Survey-** Out of 692 (at the time), only 97 (14%) of the surveys have been returned- 86 active, 6 associate, 1 supporting and 3 students. Mr. Saenger met with a few students and colleagues which represent the younger generation to start thinking of ways to bridge the gap between the generations.
- B. **Formation of committee for reviews- Update-** Mr. Callen, Mr. Morrison and Mr. Saenger met to discuss the employee review process. The Board and/or committee will therefore help Rebecca to evaluate employees at the Library. More discussion to follow at future meetings with Committee and/or Board members.

## NEW BUSINESS

- A. **Joe Walsh- Accountant- Report on Annual Audit-** Mr. Walsh presented the Board with the 2009 audit. The most important item to recognize from the audit is the loss of income before taxes between the years 2008 and 2009. It was also noted that the WDL expense doubled in 2009 compared to 2008, \$160,987 and \$80,019, respectively. Revenue was down in 2009 compared to 2008. Cash decreased in 2009, however, some was moved into CD's and about \$60,000 was used for operations.
- B. **Formation of a Budget Committee-** Mr. Clothier, as current Treasurer, Mr. Davis, as incoming KGS President, and Mrs. Noel, as incoming Treasurer, should be meeting in September.
- C. **Next Step in Hayes-** Mrs. Radford sent brochures out. There were 123 attendees, so this may be another event to attend and perhaps advertise in next years promotion of Next Step.

**ADJOURNMENT-** *Mr. O'Dell motioned to adjourn the meeting at 1:40 p.m. and the motion passed unanimously.*

Respectfully submitted,  
Marjorie Noel, Secretary

# Kansas Geophysics in the 21st Century

Hilton Wichita Airport Executive Conference Center

Wichita, Kansas — October 27-29, 2010

Please join us October 27-29, 2010, in Wichita, Kansas, for a symposium on *Kansas Geophysics in the 21st Century*, organized by the Geophysical Society of Kansas, the Kansas Geological Society, and the Kansas Geological Survey. This event commemorates the 50<sup>th</sup> anniversary of the publication of Kansas Geological Survey Bulletin 137, *Symposium on Geophysics in Kansas*, in 1959, which was the first synthesis of the status of geophysics in the state. The 2010 symposium will showcase the latest geophysical technologies being applied in Kansas.

The technical program committee, co-chaired by Dennis Hedke and Dan Merriam, has put together an impressive line-up of 20 speakers in four technical sessions. See the Technical Program Schedule on the following page for a preview of the talks. In addition, we will have an Icebreaker event on Wednesday evening, a Thursday luncheon with keynote speaker, and a Thursday dinner. We are pleased to announce that Steve Hill, 2009-10 SEG President, will be the keynote speaker for the luncheon. In his talk, he will be answering the question, “What Do We Geophysicists Do?” Dr. Hill’s abstract and bio are found below.

We invite you beat the rush and pre-register for the symposium now, either using the enclosed registration form or online at <http://gskseg.org>. There are also plenty of sponsorship opportunities available for the symposium, so if you or your company is interested in being a sponsor, please be sure to check out <http://gskseg.org> for further details.

We look forward to seeing you in Wichita in October!

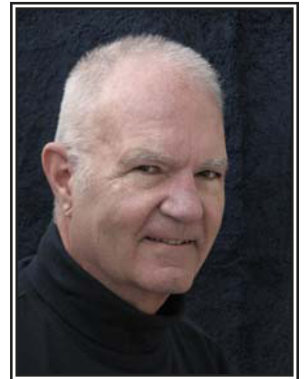
Rick Saenger and Susan Nissen  
Symposium Co-Chairs

## Technical Luncheon – What Do We Geophysicists Do?

Thursday, October 28, 2010

11:45 am – 1:15 pm

Speaker: Stephen J. Hill, 2009-10 SEG President



This presentation’s thesis is that “we geophysicists create pictures of that portion of the subsurface that we intend to touch.” The talk contains a diversity of examples drawn from Steve’s TLE Geophysics Bright Spots column, which in turn, provided illustrated summaries of the SEG’s Geophysics Journal’s research papers.

### Biography

Steve Hill has a long record of contributing to both SEG and the Geophysical Society of Tulsa. Most recently, Steve served as the SEG’s 2009-2010 SEG President. In addition to serving on many SEG committees and the Board of the Geophysical Society of Tulsa, Steve served as GST President. Steve was the founding writer for TLE’s Geophysics Bright Spots Column. After earning a bachelor’s degree in physics at Iowa State University and a doctorate in physics and astrophysics at the University of Colorado through the Joint Institute for Laboratory Astrophysics, Steve joined the faculty of the Michigan State University Astronomy Department in 1971. Steve was a member of Conoco geophysics organizations from 1978 until 2003. Steve’s assignments include manager of Conoco Seismic Processing and two years as an interpreter of Oklahoma and Gulf of Mexico seismic data. Steve also served as a technology consultant in Conoco’s International and North American Headquarters in Houston. With his “retirement” in 2002, Steve teaches at Colorado School of Mines and provides geophysical education to the industry.

# Technical Program Schedule

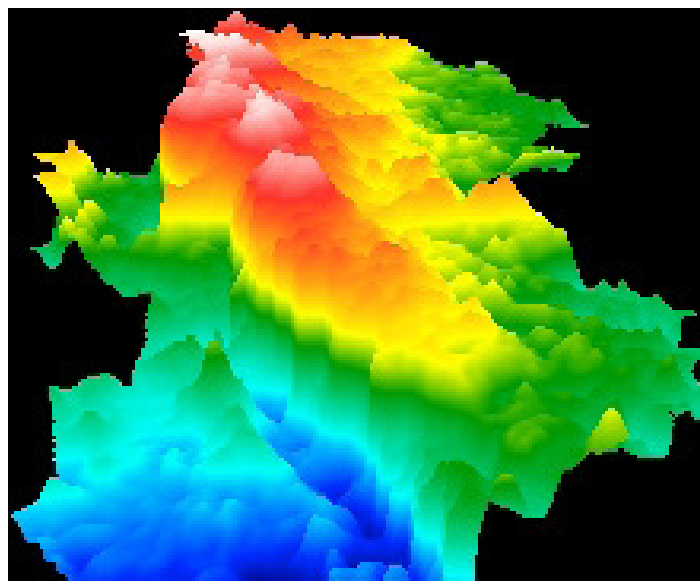
Thursday, October 28, 2010

	Time	Speaker	Title
<b>Welcome, Opening Remarks</b>	8:30	Susan Nissen, Dan Merriam	
<b>Session 1: High Resolution Applications</b> Rick Miller and George Tsofilas, Co-Chairs	8:45	Robert Henthorne - KS Dept of Transportation	Geophysical Investigations: A Department of Transportation Perspective
	9:10	George Tsofilas - University of Kansas	Borehole GPR Detection of Subsurface Voids at Kansas Highway 69 Pittsburg Bypass
	9:35	John Doveton - Kansas Geological Survey	Nuclear Magnetic Resonance Logging in Kansas
	10:00	<b>BREAK</b>	
	10:20	Rick Miller - Kansas Geological Survey	Seismic Reflection Characteristics of Subsidence Features Resulting from Dissolution
	10:45	Don Steeples - University of Kansas	Advances in High-Resolution Reflection Seismology
	11:10	Brian Miller - University of Kansas	New Innovations in Near-Surface 3-D Acquisition
	11:35	Session Q & A	
<b>Technical Luncheon</b>	11:45	Steven J. Hill, 2009-2010 SEG President	What Do We Geophysicists Do?
<b>Session 2: Data Acquisition &amp; Processing</b> Russ Opfer, Chair	1:15	Daniel Winn-Tidelands Geophysical	Beneficial Aspects of the Oyo-Geopace GSR Recording System
	1:40	Bill Pramk - GeoKinetics	A Practical Comparison of Various Land Seismic Source Options
	2:05	Lisa D'Ambrosia - Lockhart Geophysical	Waves of Successful Seismic Data
	2:30	Michael Smith - Geotrace Technologies	Bandwidth Extension Before Migration to Improve Spatial Resolution in Imaging
	2:55	Session Q & A	
	3:00	<b>BREAK</b>	
<b>Session 3: Geothermal Applications</b> Dan Merriam, Chair	3:15	John Doveton - Kansas Geological Survey	Prediction of Thermal Conductivity in Paleozoic Rocks of Kansas from Petrophysical Log Measurements
	3:40	Maria C. Richards- SMU Geothermal Laboratory	Updated Geothermal Regime of Kansas
	4:05	Andrea Förster -Deutsches GeoForschungs Zentrum	Exploring for Deep Heat in Stable Igneous Provinces
	4:30	Will Gosnold - University of North Dakota	North-central U.S. Heat Flow May be Under Determined
	4:55	Session Q & A	

Friday, October 29, 2010

<b>Session 4: Oil &amp; Gas Applications</b> Susan Nissen and Rick Saenger, Co-Chairs	8:30	Rick Saenger - Hedke-Saenger Geoscience, Ltd	Uppermost Carboniferous Incised Valley Systems in SW Kansas via 3D Seismic -Hydrocarbon Exploitation
	8:55	Bruce Karr - Fairfield Nodal	Wellington 3D-3C Seismic Processing: Long Sweeps, Statics, Out of the Box Thinking
	9:20	Dennis Hedke - Hedke-Saenger Geoscience, Ltd.	Wellington Field, Sumner County, KS: 3D Seismic Characterization, with Focus on Reservoir Attributes
	9:45	Lee Bell - Geokinetics	Processing & Analysis of the 3D-3C Bradford Survey- Marcellus Shale, PA
	10:10	<b>BREAK</b>	
	10:30	Cambrey Johnston - Weinman GeoScience	Importance of Proper Seismic Acquisition and Processing for Inversion Work
	10:55	Jim Applegate - Applegate Exploration LLC	The Next Step in Kansas Seismic Exploration
	11:20	Susan Nissen - Geophysical Consultant	Visualizing Reservoir Compartmentalization in Kansas and Colorado Mississippian Carbonates
	11:45	Session Q & A	
<b>Closing Remarks</b>	11:55	Dan Merriam, Susan Nissen	

Registration Form is inserted in this issue  
Or can be found on-line at [www.kgslibrary.com](http://www.kgslibrary.com)



# Geo-Scenes

## Preview of KGS Fall Field Trip

The KGS is sponsoring the 2010 fall field trip to examine Mississippian lithofacies and depositional history as models for subsurface Mississippian petroleum reservoirs in Kansas and northern Oklahoma. The trip is lead by Sal Mazzullo (WSU), Brian Wilhite (Woolsey Operating Co., Wichita) and Darwin Boardman (Oklahoma State University, with several field trip descriptions contributed by WSU graduate students Beau Morris and Robert Turner. The field trip will leave (by bus) from Wichita on Friday, Sept. 24 and return to Wichita the evening of Sunday, Sept. 26. Excellent, readily accessible exposures will be examined in southwest Missouri, northwest Arkansas, and northeast Oklahoma, and all outcrops are along roads except for one on a hillside adjoining a road. There will be a complimentary ice breaker at the hotel in Springfield, Missouri the evening of Friday, Sept. 24.

On this trip we will see exposures of Mississippian rocks that illustrate depositional facies, lithostratigraphic architecture, and the effects of periodic subaerial exposure and syndepositional tectonic activity of Kinderhookian to Osagean rocks, with a brief stop to see porous Meramecian cherty limestones. Throughout the trip we will refer to subsurface correlatives of these rocks and analogous petroleum reservoirs in Kansas and northern Oklahoma. Because of the great distances between stops, we are forced to examine some of the outcrops out of stratigraphic order, so bear with us. *Some* highlights of the trip are as follows:

**Mississippian caves** – on the first day of the trip we'll examine caves in the Osagean Burlington-Keokuk Limestone that formed along the pre-Pennsylvanian unconformity and which were filled with shales and thick, cross-stratified sandstones derived from the lower Pennsylvanian (Cherokee: Desmoinesian) Krebs Group (Figure 1). This exposure may be a model of the local, sporadic occurrence of sandstones in some Osagean rocks in places in subsurface Kansas (e.g., Stafford and Ness counties).

**Meramecian cherty limestones** – there is a prominent unconformity at the top of the Osage section throughout the midcontinent, and an equally dramatic unconformity at the top of the cherty Warsaw-equivalent in the field area. These subaerially-exposed rocks contain large vugs in chert and limestone (Figure 2) that are analogous to some petroleum reservoirs.

**Reefs in Kinderhookian and Lower Osagean rocks** – Mississippian reefs are proven oil reservoirs in some parts of the southern midcontinent region, principally in north Texas. Are any present in subsurface Kansas and northern Oklahoma, and if so, are they petroleum reservoirs -- can we recognize them in cores or cuttings – are they seismically expressed, and if so, how are they distinguished from remnant buried hills? Exposures of reefs of Kinderhookian and Lower Osagean age (Figure 3) will be examined in Missouri to possibly help us answer these questions.

**Tripolite (not to be confused with spiculite, chert, or chat)** – when chert is subaerially exposed to meteoric fluids it can (but not always) weather into very soft, light-weight, micro-porous rocks with as much as 50% porosity. Such rocks are referred to as “tripolite”, and they are reservoirs in some very large fields in Kansas (e.g., Glick field in Kiowa County) and northern Oklahoma. We will have the opportunity to examine thick tripolite in the Middle Osagean Reeds Spring Formation at one of the stops on this trip (Figure 4).

**Is Mississippian lithostratigraphy always of sequence-stratigraphic significance?** -- we will examine exposures illustrating the “normal” stratigraphy of Kinderhookian and Osagean rocks in terms of eustasy, transgressive-regressive cycles, and unconformity development as a background reference for cycle development in the subsurface. However, Mississippian deposition in the southern part of the field trip area was strongly overprinted by syndepositional tectonic activity that complicated the lithostratigraphy of these rocks. How about rocks with evidence of shallowing to the south instead of deepening into a presumed basin as long-held depositional models suggest? How about sections that have multiple unconformities, more than one maximum flooding surface, northward (against presumed regional dip)-dipping beds – that mimic highstand systems tract deposits – that actually down-lap exposure surfaces rather than maximum flooding surfaces? How about evidence of uplift, erosion, and the formation of angular unconformities and folded beds *within* the Osagean section? You'll see it all, and more, at several exposures, and if you're a sequence-stratigrapher you may begin to re-think your ideas. If you're an explorationist working in the southern midcontinent you'll also be forced to re-think some long-standing ideas about Mississippian reservoir occurrence.

We hope to see you on this trip as it will be a most informative and enlightening experience. It certainly has been to us studying these rocks for the last 3 years!!

*Submitted by Sal Mazzullo, Brian W. Wilhite, Darwin R. Boardman, Beau Morris, and Robert Turner*



Figure 1 – Cave in the Burlington-Keokuk Limestone filled with Pennsylvanian shale and cross-stratified sandstone. Arrow points to a wall of the cave.

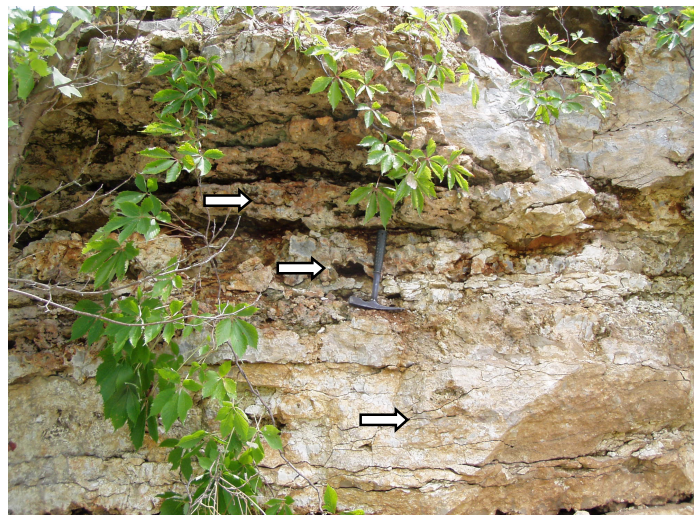


Figure 2 – Vuggy porosity (arrows) in Warsaw-equivalent chert and limestone.

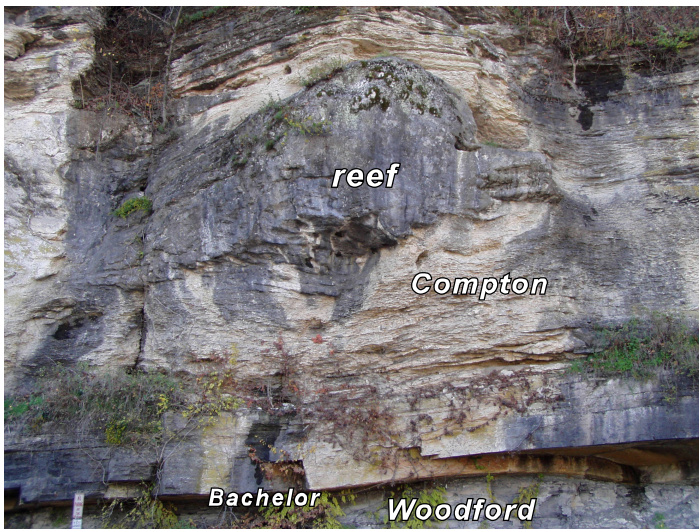


Figure 3 – Thick (~7 ft) reef in the Kinderhookian Compton Formation



Figure 4 – Thick tripolite in the Middle Osagean Reeds Spring Formation.



**In the photo top right and the one to the immediate left show folding of Mississippian age Madison Limestone and Ordovician age Big Horn Dolomite as they overlie the down-thrown fault block on the West side of the Bighorn Mountains in NE Wyoming.**

**Photo in the top left is the one and only Bullwinkle.**

**Photo on the lower right shows a fault exposed in a roadcut on the East side of the Big Horn Mountains where Pennsylvanian age Amsden (shown on left side) is in contact with upthrown Mississippian age Madison Limestone (on right side). Also visible is the oxidized zone along the fault plane.**

*Photos courtesy of Tim Pierce*



# PROFESSIONAL DIRECTORY

**Kirk Rundle**  
**Consulting Geophysicist**

3D Seismic Design, Acquisition to Processing QC.,  
Interpretation and Analysis, Subsurface Integration  
7340 W. 21st. N., Ste. 100  
Wichita, Kansas 67205

Office: 316-721-1421 Fax: 316-721-1843  
Email: kirk@rundlegeo.com

**DON V. RIDER**  
**Consulting Petroleum Geologist**  
Well Site Supervision  
Geological Studies  
Completions

8910 W. Central Park Ct.  
Wichita, KS 67205

Office PH: 316-729-4445 Cell PH: 316-706-7199

Tel.: (972) 712-9036  
Fax: (972) 712-0258  
Cell: (214) 223-1784

**LANG J. FUQUA**  
**Certified Petroleum Geologist**

4201 Tanglewood Ln.  
Frisco, Texas 75035

**WESLEY D. HANSEN**  
**Consulting Geologist**

Well site Supervision  
Geologic Studies  
212 N. Market, Ste 257  
Wichita, Kansas 67202  
Off: (316) 263-7313  
Mobile: (316) 772-6188



**KEVIN L. KESSLER**

INDEPENDENT/CONSULTING PETROLEUM GEOLOGIST

WELLSITE SUPERVISION • GEOLOGIC RESEARCH  
OIL & GAS PROSPECTS  
KANSAS & EASTERN COLORADO

MAILING ADDRESS PHONE  
1199 N. PONDEROSA RD. RES.: (316) 522-7338  
BELLE PLAINE, KS 67013 MOBILE: (316) 706-6636  
EMAIL: KKESSLER1199@AOL.COM

**KGJ ENTERPRISES**

Contract Oil & Gas Accounting &  
Office Management

Kathryn G. James, MBA (316) 775-0954  
4278 SW 100th ST. (316) 250-5989  
Augusta, KS 67010 kgjames@onemain.com

**ROGER L. MARTIN**

*Independent Petroleum Geologist*

200 E 1st St, Ste 405, Wichita, KS 67202

Office 316-833-2722 Cell: 316-250-6970  
KS Field Cell: 316-655-1227  
Fax: 316-425-3829  
Email: rogermartingeo@yahoo.com

**ALFRED JAMES III**  
**Petroleum Geologist**  
Kansas - Colorado - Utah

200 W. Douglas, Ste. 525, Wichita, Kansas 67202

SIPES # 1111  
Office (316) 267-7592  
alfred.james55@yahoo.com

**M. Bradford Rine**

*Honorary Life Member—Kansas Geological Society*

Licensed Geologist—KS. #204  
Registered Professional Geologist—Wyo. # 189  
Certified Geologist—A.A.P.G. # 2647  
S.I.P.E.S. # 1584 S.P.E. #109833-4

PROSPECT EVALUATION • PROSPECT GENERATION  
WELLSITE SUPERVISION • EXPERT TESTIMONY • OPERATIONS  
PROPERTY EVALUATION • RESERVOIR STUDIES  
DRLG./COMP. CONSULTATION

Suite 415  
100 S. Main  
Wichita, KS 67202

Office: (316) 262-5418  
Fax: (316) 264-1328  
Cell: (316) 250-5941



Paul Gunzelman  
President/Geologist

Wichita, Kansas 316.634.6026  
email p.gun@sbcglobal.net

**ROBERT J. GUTRU**

**Geologist**

300 Farmers & Bankers Bldg.  
200 East First Street  
Wichita, Kansas 67202  
Off: (316) 265-3402

**MELLAND ENGINEERING**

*Petroleum Engineering & Geological Consulting*

**James E. Melland, P.E.**  
Owner

Office: (620) 241-4621 Fax: (620) 241-2621  
Cell Phone: (661) 319-5950  
Email: jemelland@sbcglobal.net  
Jamesm@mellandengineering.com

P.O. Box 841, McPherson, KS 67460

  
**GeoCertified, LLC**  
 Professional Geological Services  
 Hydrocarbon Detectors and Geologist Onsite 24/7  
 Phone: (913) 441-2311 • Cell: (913) 544-7527  
[www.geocertified.com](http://www.geocertified.com)

**BRUCE GOLOB**  
Geophysical Consultant

- ◆ 3D Seismic Interpretation, Mapping & Depth Conversion
- ◆ Well Log-to-Seismic Integration, Phase Matching
- ◆ Processing / Re-Processing Guidance & QC
- ◆ World-Wide Experience, Kansas Focus

Cell: 303-618-0972    Email: [BruceGolob@yahoo.com](mailto:BruceGolob@yahoo.com)

***Blue Ribbon Drilling, LLC***  
PO Box 279, Dewey, OK 74029

Phone and Fax: 918-534-2322  
 John's Cell Phone: 918-440-9639  
 Larry's Cell Phone: 918-440-9638  
 Jeff's Cell Phone: 918-440-9647

Email: [johnroutree@bratco-operating.com](mailto:johnroutree@bratco-operating.com)

**PLAINSMEN LAND LLC**

Cash available for lease acquisition  
Supporting Oil & Gas Prospects

Dan Earl Duggan	Steve Meese
817.347.9300	405.820.2442
<a href="mailto:danearl@dxwells.com">danearl@dxwells.com</a>	<a href="mailto:smeese3105@yahoo.com">smeese3105@yahoo.com</a>



**Help Wanted!**  
**Integration Project**

If you have *any* time you could give to the Library,  
we have projects that  
could move a little faster with some  
**Expert Professional Geologists**

**Just a few hours a week would make such  
a difference.**

To volunteer, please contact Ted Jochems  
or Rebecca at the Library  
**265-8676**

**Free To Good Home (or office)**

Geophysical Journals  
 AAPG Bulletins  
 Economic Geology  
 Mining Engineering  
 Journal of Sedimentary Petrology  
 Shale Shakers  
 GSA Bulletins

**The Following Are For Sale**

The Kansas Geological Foundation is offering electric logs on microfiche for sale. This data is from 10 western states. The microfiche will be sold as is, in bulk, by state (no cherry picking). Prices are proportionate to the number of fiche available.

**Prices are firm, you haul or pay shipping**

Wyoming (~ 45,000 logs) - \$250.00  
 North Dakota (~20,000 logs) - \$200.00  
 Montana (~20,000 logs) - \$200.00  
 Utah (~20,000 logs) - \$200.00  
 Colorado—\$25.00  
 S. Dakota—\$50.00  
 New Mexico—\$50.00  
 Idaho—\$25.00  
 Arizona—\$25.00  
 Oklahoma—\$25.00

Kansas Driller's Logs: Well Log Bureau & Non-Well Log Bureau

**East Ranges:**

1 set— ~ 65,000 drillers logs—\$100.00

**West Ranges:**

Set A— ~ 41,000 drillers logs—\$75.00  
 Set B— ~ 16,000 drillers logs—\$50.00  
 Set C— ~ 70,000 drillers logs—\$100.00



WESTERN KANSAS  
SOUTHERN NEBRASKA



EASTERN COLORADO  
OKLAHOMA & TEXAS PANHANDLES

**10 Drilling Rigs**

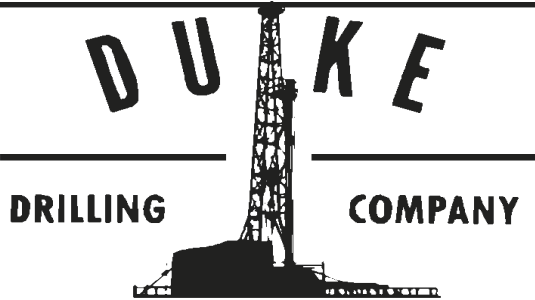
For contract information, please contact:  
Blaine Miller / Drilling Department  
316-858-8607 (Direct) or 316-267-3241

250 N. Water #300—Wichita, KS 67202

**10 Well Service Rigs &  
Roustabout Services**

For contract information, please contact:  
Alan Hays, Well Service Sprvsr.  
785-421-2103 or 785-567-8739 (cell)

East Highway 24—Hill City, KS 67642



**ROTARY DRILLING CONTRACTOR**

620 Hubbard PO Box 823  
Great Bend, KS 67530  
Phone 620-793-8366

100 S. Main, Ste. 410,  
Wichita, KS 67202  
Phone 316-267-1331  
Fax 316-267-5180



**Tomcat Drilling**

3 Rotary Rigs - Rotary Drilling Contractor  
Southwest Kansas • Oklahoma & Texas Panhandles

Tim Sanders  
316-259-1652 Cell

316-262-8554 phone

100 S. Main, Suite 508  
Wichita, KS 67202

tjsanders@tomcat.kscoxmail.com

Great Bend (620) 793-5861    Ness City (785) 798-3843    Medicine Lodge (620) 886-5926



Acidizing Available at Medicine Lodge District

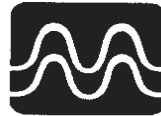
Russell  
(785) 483-2627

Oakley  
(785) 672-3452

**Lockhart Geophysical Company**

Call (303) 592-5220 FAX (303) 592-5225  
Or E-mail lockden@xpert.net

2D & 3D Seismic Acquisition  
Vibroseis Specialists



**JAPEX GDAPS-4** Distributed  
System

*We'll give you seismic excellence*

**MBC**

WELL LOGGING & LEASING  
UNMANNED GAS DETECTORS  
MUD LOGGING  
CERTIFIED INSTRUMENT TECH  
SERVING THE KAN-O-TEC AREA SINCE 1990

AUSTIN GARNER

MARLA GARNER

24-HOUR PHONE (620) 873-2953  
MEADE, KANSAS



STORES

Ness City, KS  
800-589-5733

El Dorado, KS  
316-321-9323

Garden City, KS  
877-976-1700

Spivey, KS  
316-532-5261

McCook, NE  
308-345-1542

SALES OFFICES

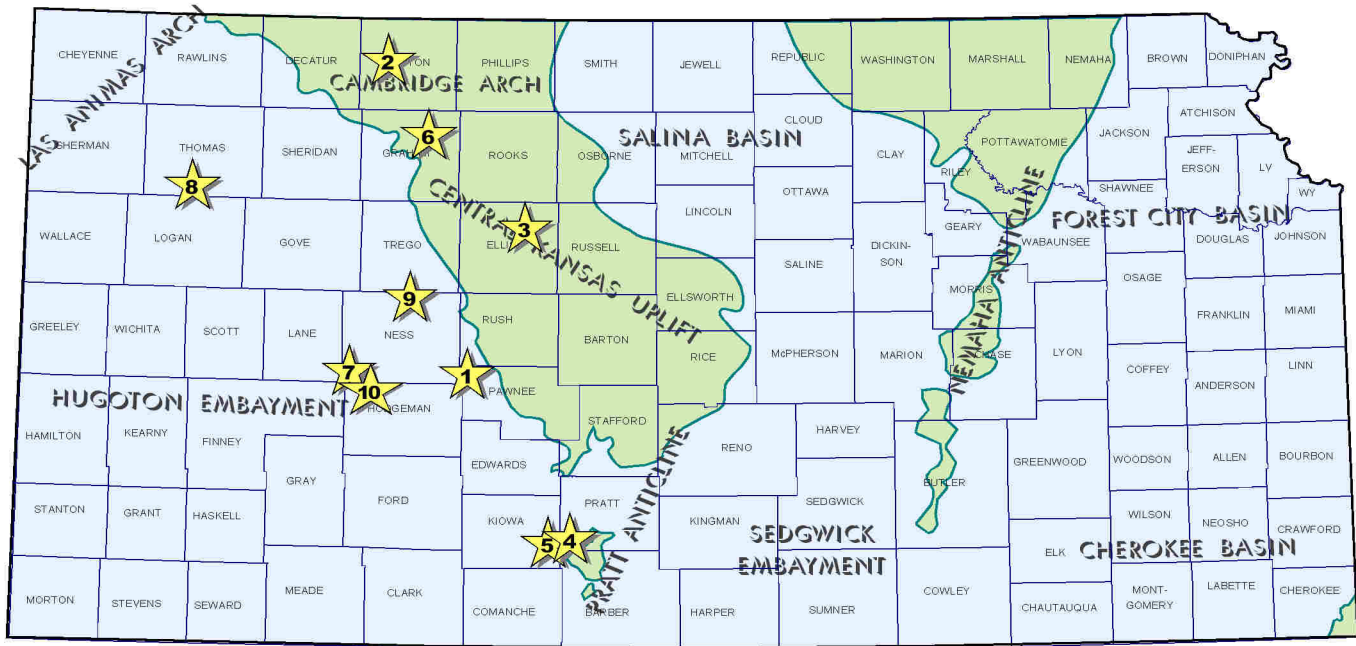
Wichita, KS  
800-777-7672

Great Bend, KS  
316-792-3130  
Mob: 316-786-4255

**FULL LINE SUPPLY STORE**

With Pump Shop  
Offering New & Used  
Pipe, Equip. & Fittings  
Employee Owned

**New Office**  
Hugoton, KS  
620-428-6604



(1) **Downing-Nelson Oil Company**, Hays (KS), has successfully completed the No. 1-16 Shean in **Pawnee** County for 100 barrels of oil per day, no water. The well was drilled as an easterly stepout of the Browns Grove field which has produced Mississippian oil since 1957. The Shean well topped the Mississippian Osage formation at 4272 (2085 KB) at site drilled in the NW/4 NW/4 of section 16- T20s- R20W, slightly over one-half mile from existing infield wells. Operator confirmed Drill Stem Test shows of 924 feet of clean oil with crude recovered from open hole at 4282 to 4293 feet. Crude gravity is 40 degrees. First production started on July 23, 2010, about ten and one-quarter miles south of Alexander, Kansas.

(2) **IA Operating**, Wichita (KS), has discovered Lansing-Kansas City oil reserves at their Maddy No. 4-1 in **Norton** County. The new unnamed pool opener was completed and put on pump on May 25, 2010 at site located in the SW/4 of section 4- T3s- R24W. Daily production rate and pay depth has not been disclosed. Murfin Drilling tools drilled the well to a total depth of 3720 feet. The Maddy well found deposits over two miles southeast of known production in the Thirty-six field, about seven miles west of Norton, Kansas.

(3) **Staab Oil Company**, Hays (KS), has successfully expanded production in the Reed Northwest field in **Ellis** County with the completion of the No. 1 Wilfric (Karlin). Located in the NE/4 of section 31- T12s- R17W, the field stepout well is producing 20 barrels of oil per day, no water. Production comes from the Arbuckle Dolomite perforated from 3586 to 3593 feet. Shields Drilling tools bottomed the well at a total depth of 3658 feet. The well was put on pump on May 29, 2010. Well site is located two and one-quarter miles north and one and one-quarter miles west of Catherine, Kansas.

(4) **Lotus Operating Company LLC**, Wichita (KS), has completed the Brenner No. 1 in **Pratt** County for 25 barrels of oil, 150 barrels of water and 20,000 cubic feet of natural gas per day. The development well was drilled to a total depth of 4845 feet at location in the NW/4 of section 14- T29s- R15W, about six miles west of Coats, Kansas. Operator perforated the Mississippian formation from 4466 to 4490 feet. First production commenced on March 27, 2010. The well expands oil and gas production in the Atsfer field to the northeast.

(5) Elsewhere in **Kiowa** County, **Lotus Operating** is producing an unknown amount of crude oil from the Mississippian formation at the Peister No. 1-A. The well is a southwesterly stepout from production in the Soldier Creek field. Well location lies in the SE/4 of section 23- T29s- R16W, nearly three and one half miles north and two and one-half miles east of Belvidere, Kansas. Duke Drilling tools were contracted to drill the well to a total depth of 4995 feet. The Peister 1-A was placed on pump on May 15, 2010.

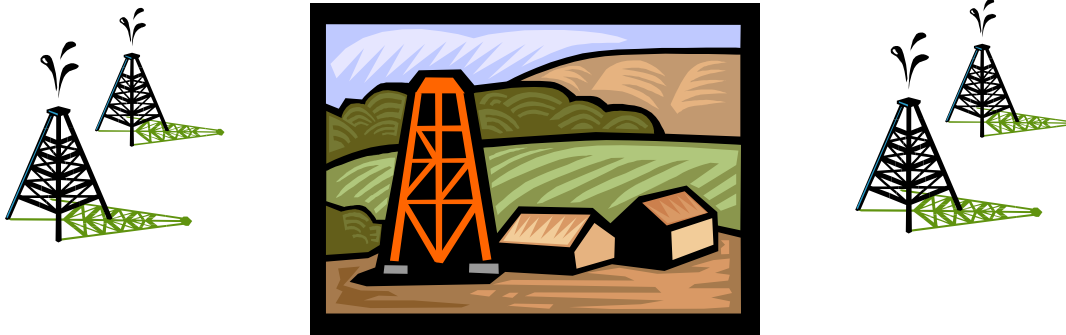
(6) **Gateway Resources LLC**, Wichita (KS), is pumping 15 barrels of oil and 110 barrels of water per day at the Worcester No. 2-17, spotted in the SE/4 of section 17- T7s- R22W, in **Graham** County. The development well discovered a new pay source in the Marmaton formation within the Alda oil field. Commingled production was obtained from perforations shot in the Marmaton from 3815 to 3818 feet, as well as from Lansing-Kansas City 'C' zone at 3604 to 3607.5 feet and the 'L' zone at 3728 to 3735 feet. All zones were given light acid jobs. WW Drilling served as contractor and drilled the well to a total depth of 4100 feet. Field area is located four and three-quarters miles north and two and one-quarter miles east of Hill City, Kansas.

(7) **Palomino Petroleum, Inc.**, Wichita (KS), is pumping 31 barrels of oil and 35 barrels of water per day at the No. 1 Goodman Family Trust, SW/4 of section 35- T20s- R26W, **Ness** County. The wildcat well opens a new unnamed oil field three-quarters mile west of the Buda field, about thirteen miles southwest of Laird, Kansas. Pay comes from Mississippian perforations from 4431 to 4433 feet. Top of the Mississippian Dolomite was tagged at 4425 (-1978 KB). Loggers total depth is 4716 feet.

(8) **Slawson Exploration Company**, Oklahoma City (OK), has established Cherokee (Johnson Zone) oil production at site located nearly three-quarters mile east of the Jimmy Southeast field in **Thomas** County. The No. 1 Soucie K, spotted in the SE/4 NW/4 of section 24- T10s- R34W, was completed on June 2, 2010. Production details remain confidential. The well was drilled to a total depth of 4800 feet. The new field has not been named.

(9) **Grand Mesa Operating Company**, Wichita (KS), has discovered Cherokee Sand oil reserves at their No. 1-8 Beamer, located in the SW/4 of section 8- T16s- R23W, **Ness** County. The wildcat well is producing an undisclosed amount of crude at site located nearly one and one half miles from closest known production in the Osgood field, about three miles northeast of Ransom, Kansas. Murfin Drilling tools bottomed the well at a total depth of 4550 feet. Well was put on pump on June 17, 2010.

(10) **American Warrior, Inc.**, Garden City (KS), has opened a new Mississippian oil field in **Hodgeman** county with the completion of the No. 1-10 Nuss, NW/4 of section 10- T21s- R25W. The unnamed pool opener was put on pump on July 1, 2010 for an undisclosed rate. Well site lies three-quarters mile northwest of abandoned Cherokee production in the Ploger field. Duke Drilling's Rig No. 5 drilled the well to a total depth of 4480 feet. Field area is situated thirteen miles northwest of Jetmore, Kansas.

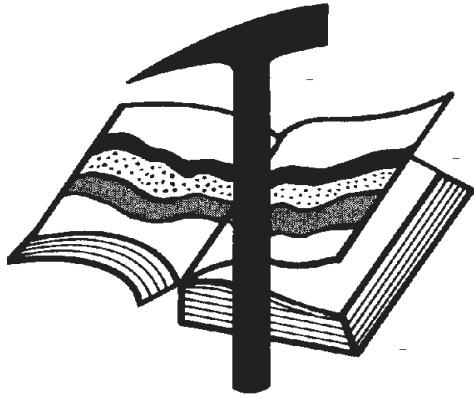


## **KGS Annual Shooting Tournament**

**Friday October 1st**

**Lynbrooke Sporting Clays, Augusta, KS**

**Registration Form Inside This Issue  
Or On-Line under EVENTS TAB**



# Kansas Geological Foundation

Web Site: [www.kgfoundation.org](http://www.kgfoundation.org)

**212 North Market  
Wichita, Kansas 67202**

A not-for-profit educational and scientific corporation

## **GOALS:**

- promote geology and earth science
- preserve geological records
- establish memorials and endowments
- support field trips and seminars
- financial aid and grants to students

**PLEASE HELP SUPPORT THE FOUNDATION**

## **Kansas Geological Foundation Services**

The Kansas Geological Foundation provides the following services as a part of the organization's commitment to educate the public regarding earth science.

### **Speaker's Bureau**

A list of speakers available to talk about various aspects of geology may be obtained by contacting Janice Bright at the KGS Library, 265-8676. This service is free to the public.

### **DVD/Videotape Library**

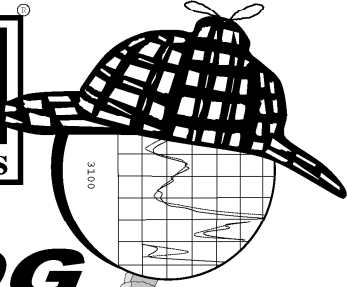
The KGF maintains a DVD & videotape library focused primarily on the various fields of earth science. These tapes may be checked out without charge by the public. To obtain a list of tapes, please contact the KGS Library, 212 N. Market, Ste. 100, Wichita, KS 67202, or call Janice Bright at 265-8676.

The Kansas Geological Foundation was founded in March, 1989 as a not-for-profit corporation under the guidelines of section 501(c)(3) of the tax code to provide individuals and corporations the opportunity to further the science of geology. It is dedicated to providing charitable, scientific, literary and educational opportunities in the field of geology for the professional geologist as well as the general public.

KGF can receive in-kind donations through which the donor may receive a tax deduction. Of equal importance, the KGF provides the financial resources to sort, process and file this data at the KGS library. If you have a donation to make, please contact the KGF at 265-8676.

Your tax-deductible membership donation helps to defray the cost of processing donations and to support public education programs about the science of geology. Annual membership begins at \$50.00 per year. Donations of \$100.00 or more are encouraged through the following clubs:

<b>Century Club</b>	\$ 100 to \$ 499
<b>\$500 Club</b>	\$ 500 to \$ 999
<b>Millennium Club</b>	\$1000 to \$5000
<b>President's Club</b>	\$5000 and over



**LOG**  
**Sleuth**  
**2000**

**AND RASTER IMAGE  
WELL LOGS**

**OVER  
5 MILLION  
LOGS  
AVAILABLE**

**1-800-310-6451**

**SALES@MJLOGS.COM**

**CALGARY • DENVER**

**U.S.A.  
LOGS FOR:**

**ALABAMA  
ALASKA  
ARKANSAS  
ARIZONA  
CALIFORNIA  
COLORADO  
FLORIDA  
IDAHO  
ILLINOIS  
INDIANA  
KANSAS  
LOUISIANA  
MICHIGAN  
MISSOURI  
MISSISSIPPI  
MONTANA  
NEBRASKA  
NEVADA  
NEW MEXICO  
NORTH DAKOTA  
OKLAHOMA  
OREGON  
SOUTH DAKOTA  
TEXAS  
UTAH  
WASHINGTON  
WEST VIRGINIA  
WYOMING**

**CANADIAN  
LOGS FOR:**

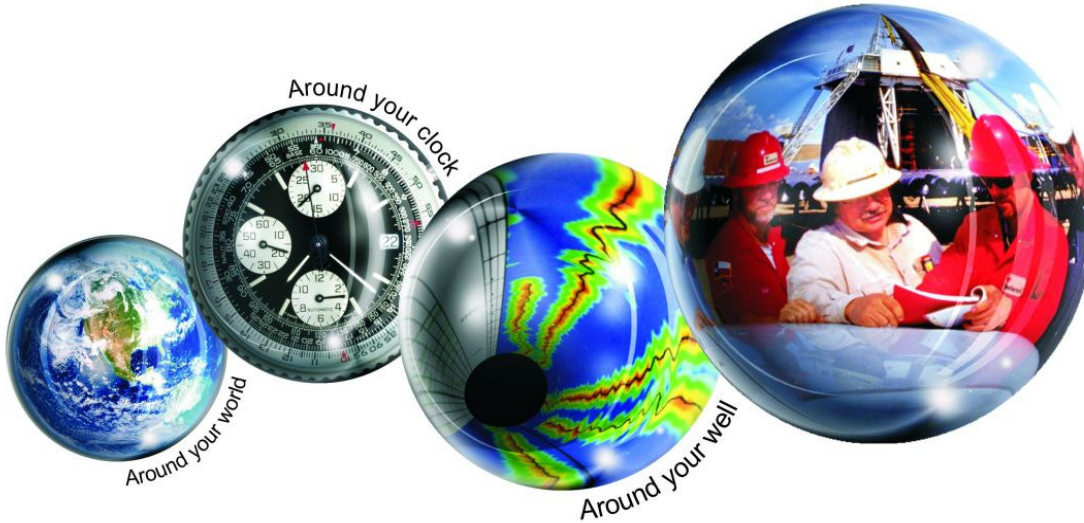
**ALBERTA  
BRITISH COLUMBIA  
SASKATCHEWAN  
MANITOBA  
FEDERAL AREAS**

## Kansas Geological Foundation Memorials

KGS Member	Date Deceased	Memorial Established	KGS Member	Date Deceased	Memorial Established
Dan Bowles	09/89	1990	Floyd W. "Bud" Mallonee	10/00	2000
John Brewer	10/89	1990	Ralph W. Ruuwe	09/00	2000
George Bruce	08/89	1990	Robert L. Slamal	02/01	2001
Robert Gebhart	01/90	1990	Jerold E. Jespersen	06/01	2001
Ray Anderson, Jr.	11/90	1990	William A. Sladek	06/01	2001
Harold McNeil	03/91	1991	Harlan B. Dixon	06/01	2001
Millard W. Smith	08/91	1991	Edward B. Donnelly	08/01	2001
Clinton Engstrand	09/91	1991	Richard P. Nixon	02/02	2002
M.F. "Ted" Bear	10/91	1991	Robert W. Frensley	12/01	2002
James & Kathryn Gould	11/91	1991	Gerald W. Zorger	01/02	2002
E. Gail Carpenter	06/91	1993	Don L. Calvin	03/02	2002
Benton Brooks	09/92	1992	Claud Sheats	02/02	2002
Robert C. Armstrong	01/93	1993	Merle Britting	2002	2002
Nancy Lorenz	02/93	1993	Harold Trapp	11/02	2002
Norman R. Stewart	07/93	1993	Donald M. Brown	11/02	2003
Robert W. Watchous	12/93	1993	Elwyn Nagel	03/03	2003
J. George Klein	07/94	1994	Robert Noll	09/03	2003
Harold C.J. Terhune	01/95	1995	Benny Singleton	09/03	2003
Carl Todd	01/95	1995	Jay Dirks	2003	2003
Don R. Pate	03/95	1995	J. Mark Richardson	02/04	2004
R. James Gear	05/95	1995	John "Jack" Barwick	02/01	2004
Vernon Hess	06/95	1995	Richard Roby	03/04	2004
E. K. Edmiston	06/95	1995	Ruth Bell Steinberg	2004	2004
Jack Rine	07/95	1995	Gordon Keen	03/04	2004
Lee Cornell	08/95	1995	Lloyd Tarrant	05/04	2004
John Graves	10/95	1995	Robert J. "Rob" Dietterich	08/96	2004
Wilson Rains	10/95	1995	Mervyn Mace	12/04	2004
Heber Beardmore, Jr.	09/96	1996	Donald Hoy Smith	04/05	2005
Elmer "Lucky" Opfer	12/96	1996	Richard M. Foley	06/05	2005
Raymond M. Goodin	01/97	1997	Wayne Brinegar	06/05	2005
Donald F. Moore	10/92	1997	Jack Heathman	05/06	2006
Gerald J. Kathol	03/97	1997	Charles Kaiser	09/06	2006
James D. Davies	08/88	1997	Rod Sweetman	08/06	2006
R. Kenneth Smith	04/97	1997	Karl Becker	10/06	2006
Robert L. Dilts	05/97	1997	Frank Hamlin	10/06	2006
Delmer L. Powers	06/72	1997	Marvin Douglas	12/06	2006
Gene Falkowski	11/97	1997	Robert W. Hammond	04/07	2007
Arthur (Bill) Jacques	01/98	1998	Eldon Frazey	04/07	2007
Bus Woods	01/98	1998	Pete Amstutz	05/07	2007
Frank M. Brooks	03/98	1998	Charles Spradlin	05/07	2007
Robert F. Walters	04/98	1998	Donald R. "Bob" Douglass	09/07	2007
Stephen Powell	04/98	1998	Vincent Hiebsch	11/07	2007
Deane Jirrels	05/98	1998	Glen C. Thrasher	03/08	2008
William G. Iversen	07/98	1998	Peg Walters	06/08	2008
Ann E. Watchous	08/98	1998	Theodore "Ted" Sandberg	07/08	2008
W.R. "Bill" Murfin	09/98	1998	James Ralstin	11/08	2008
Donald L. Hellar	11/98	1998	Earl Brandt	04/09	2009
Joseph E. Rakaskas	01/99	1999	Walter DeLozier	05/09	2009
Charles W. Steincamp	02/99	1999	John Stone	02/10	2010
Robert and Betty Glover	10/96	1998	Craig Caulk	03/10	2010
Howard E. Schwerdtfeger	11/98	1999	Joseph E. Moreland, Jr.	03/10	2010
W. W. "Brick" Wakefield	03/99	1999	Gene Garmon	03/10	2010
V. Richard Hoover	01/00	2000	James F. Dilts	05/10	2010
Warren E. Tomlinson	01/00	2000	Jerry Pike	05/10	2010
James A. Morris	01/00	2000	Donald Hollar	06/10	2010
Eric H. Jager	03/00	2000	Delbert Costa	08/10	2010
Kenneth W. Johnson	03/00	2000	John Tanner	08/10	2010
Dean C. Schaake	03/00	2000			
Fred S. Lillibridge	05/00	2000			
Jerry A. Langrehr	07/00	2000			
Clark A. Roach	07/00	2000			



**Weatherford®**



## All Around You

**Weatherford has always been driven by your needs.**

Now, with the addition of Precision Energy Services we're continuing to build a world of skills, services and technologies that revolve – and evolve – around you.

### **The result?**

An expanded global network of 25,000 people, 730 service bases and 87 manufacturing facilities in 100 countries.

This increased local knowledge and service is there to support you anywhere, anytime. From midday in the Middle East to midnight in the middle of nowhere.

And with greatly strengthened capabilities in the critical evaluation skills of directional drilling and wireline logging, we can do even more to improve the profitability and productivity of your wells.

To see how our sphere of services can work for you, visit [www.weatherford.com](http://www.weatherford.com) or contact either your Weatherford or former Precision Energy Services representative.

Drilling | Evaluation | Completion | Production | Intervention

© 2006 Weatherford International Ltd. All rights reserved. Incorporates proprietary and patented Weatherford technology.


**CHANGE SERVICE REQUESTED**

**KGS BULLETIN**

## September 2010

Sun	Mon	Tue	Wed	Thu	Fri	Sat
			1	2	3	4
5	6 <i>Library Closed Labor Day</i>	7 Tech Talk	8	9	10	11
12	13	14 PTTC Seminar Great Bend		16	17	18
19	20	21 Tech Talk	22	23	24	25
26	27	28	29	30	KGS Field Trip	
KGS Field Trip						

## October 2010

Sun	Mon	Tue	Wed	Thu	Fri	Sat
					1 Field Trip Core Workshop	2
					KGS Shoot	
3	4	5 Tech Talk	6	7	8	9
10	11	12 KSG Board	13	14	15	16
17	18	19 Tech Talk	20	21	22	23
24	25	26 Tech Talk	27	28	29	30
31			Kansas Geophysics in the 21st Century– Airport Hilton			